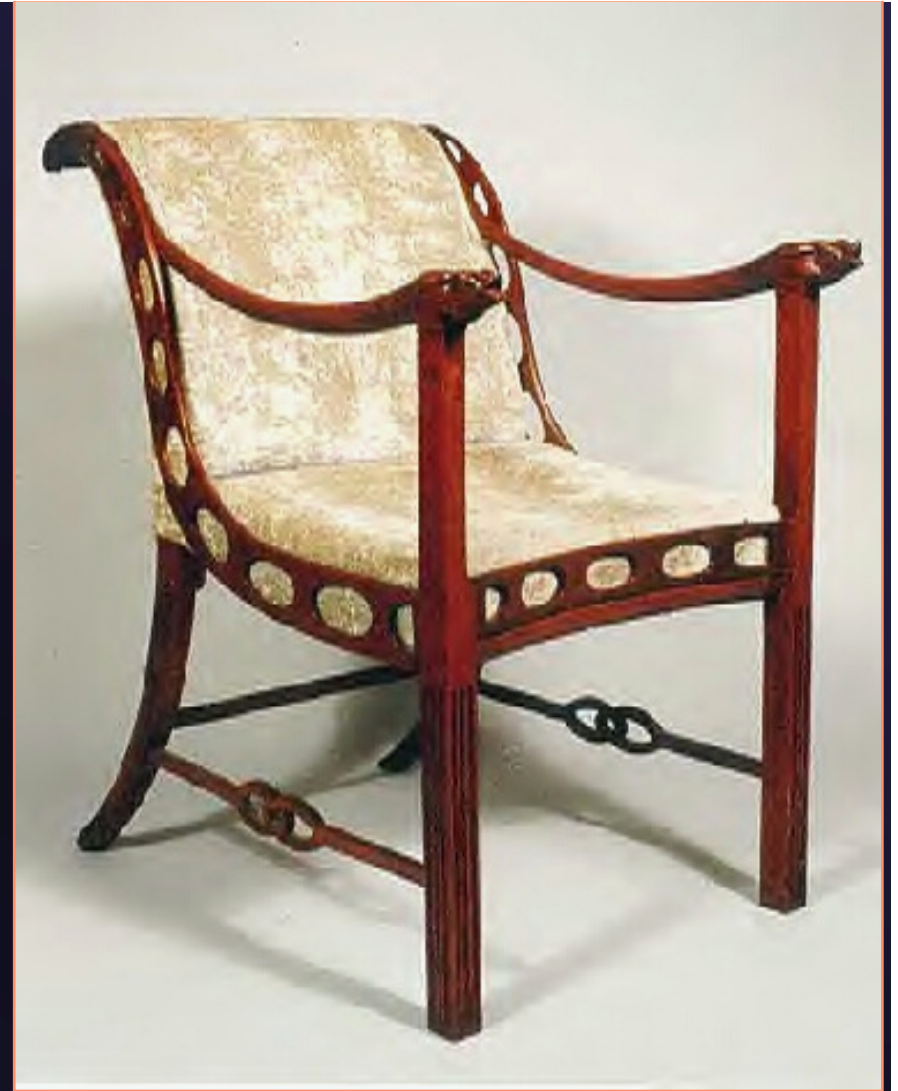


The “Aesthetic Movement”

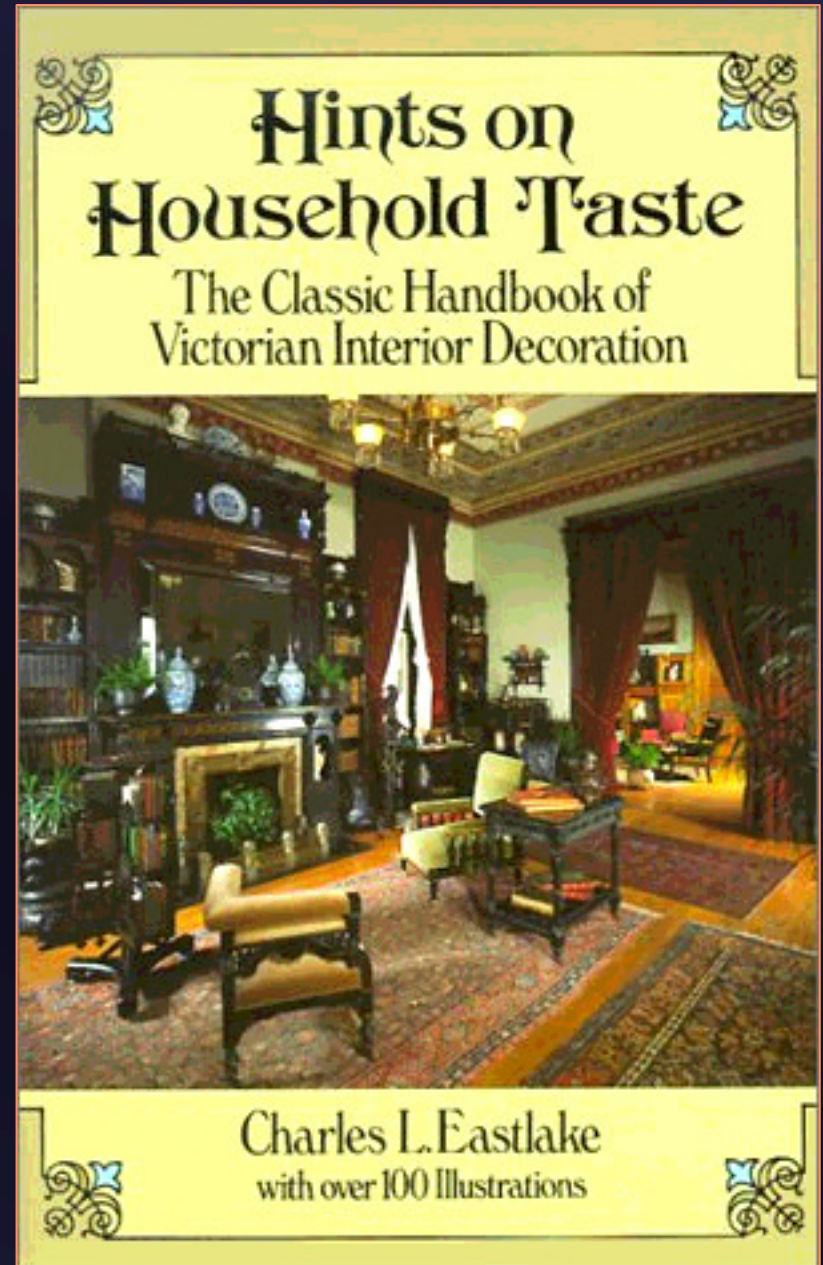
- ❖ Last quarter of 19th c.
- ❖ Spirit of reform
- ❖ Many forms
 - ◆ All against excessive ornamentation
 - ◆ For cultivation of beauty in every area of life
 - ◆ Objects of daily use as well as works of art
- ❖ Gothic revival
- ❖ Interest in Oriental design



This chair was advertised as an Aesthetic movement arm chair made by one of major cabinet makers of late 19th century i.e. John Jeliff, Herter Brothers, J & JW Meeks, or J.A. Roux Shipping extra. Price: \$3,950.00
www.ofofakindantiques.com/online_antique_gallery/antique_furniture_gallery/antique_furniture_shop_1.htm

Charles Locke Eastlake

- ❖ English style reformer
 - ◆ architect, artist, author
 - ◆ popular from 1870 to 1890's
- ❖ *Hints on Household Taste*
 - ◆ Brought ideas to America
- ❖ Furniture style
 - ◆ simplified, rectilinear
 - ◆ Gothic and Japanese influence



<http://images.amazon.com>

Compare



Belter chair
ca 1850 - 1860



Eastlake chair
ca 1885

Eastlake Style

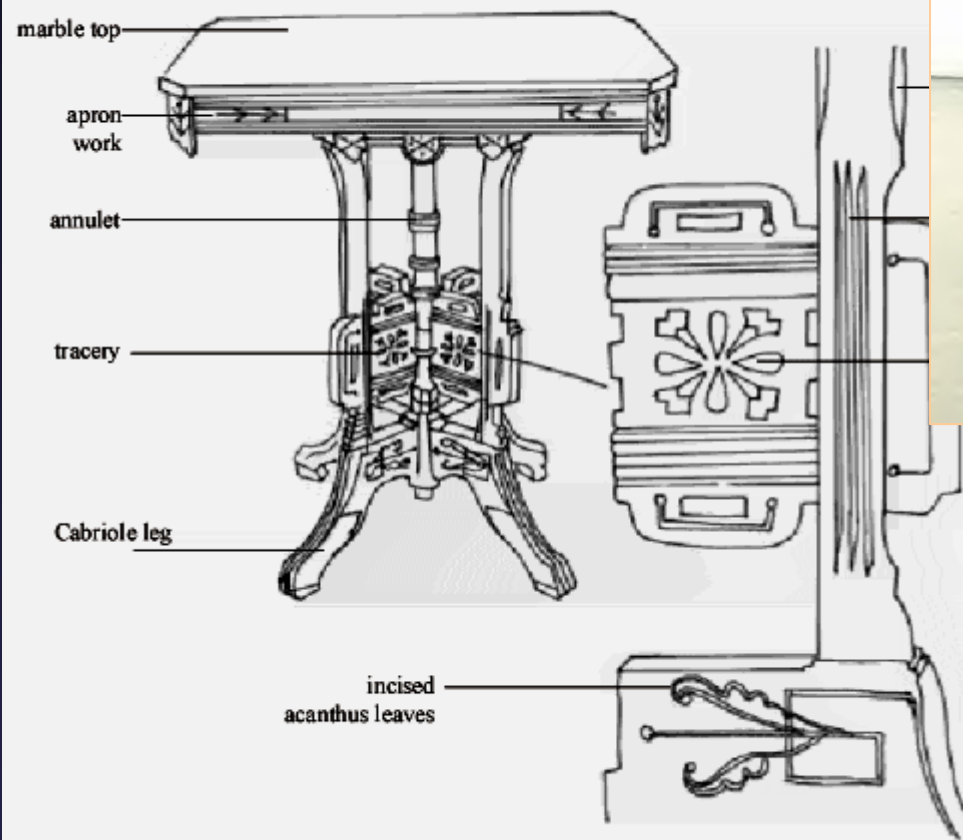
Walnut Chair, c1860-70





Eastlake Tables

Eastlake Style Table



Eastlake Dining Tables

<http://antiquesandarts.com/catalog/images/>



ca 1865 - 85

Compare Eastlake versus Victorian



Eastlake Style



Eastlake Dresser & Bed



<http://www.slawinski.com/pictures/a7h9.JPG>

Rosson House Phoenix 1895

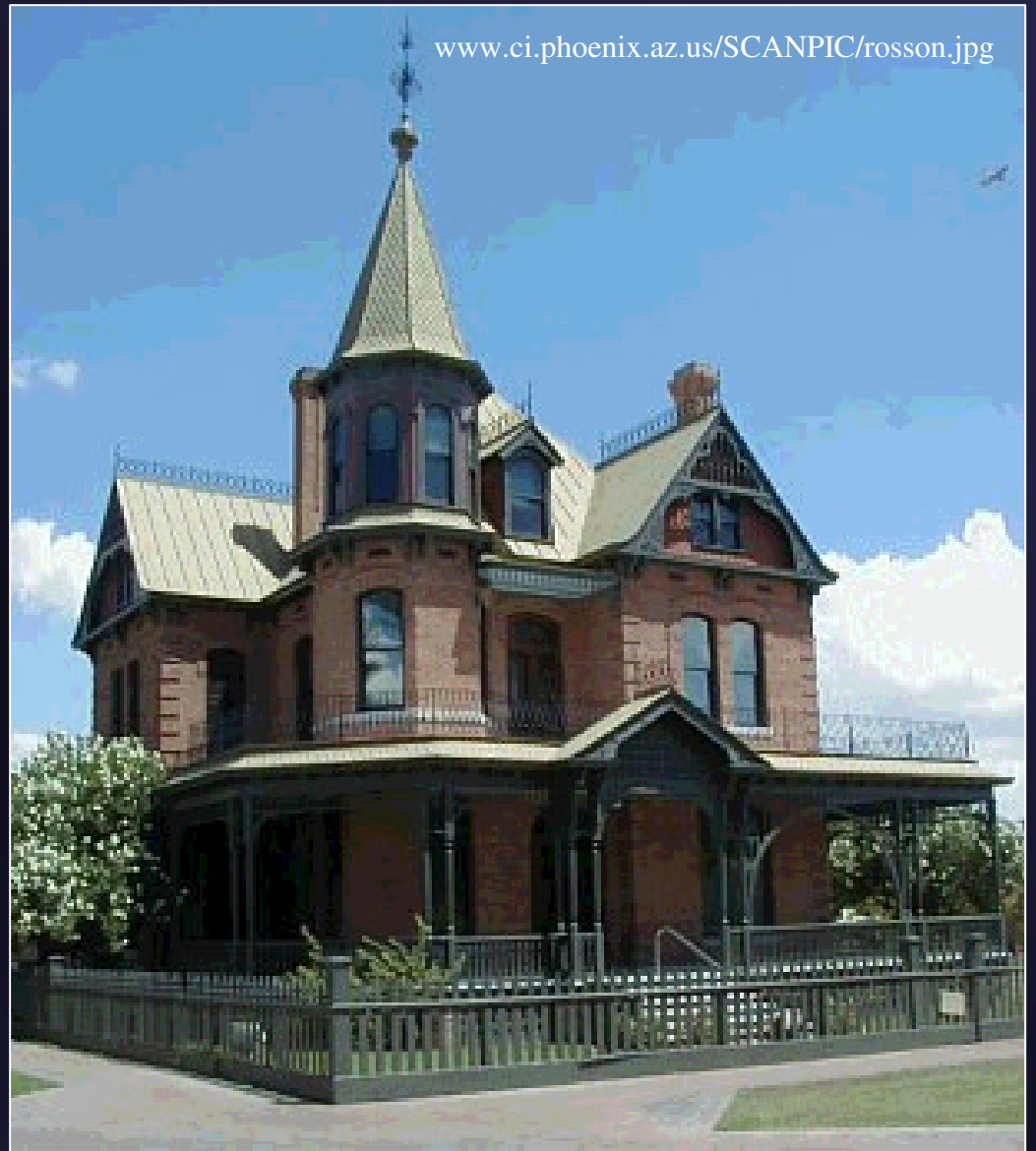
Location:

Heritage & Science Park

7th and Monroe

Open for tours – Call:

(602) 262-5029



Built in 1895 for Dr. and Mrs. Roland Lee Rosson, the house is an authentically restored example of Victorian Eastlake architecture. Dr. Rosson also served as mayor for a term.

www.morrissociety.org

Arts & Crafts

✦ Reform movement

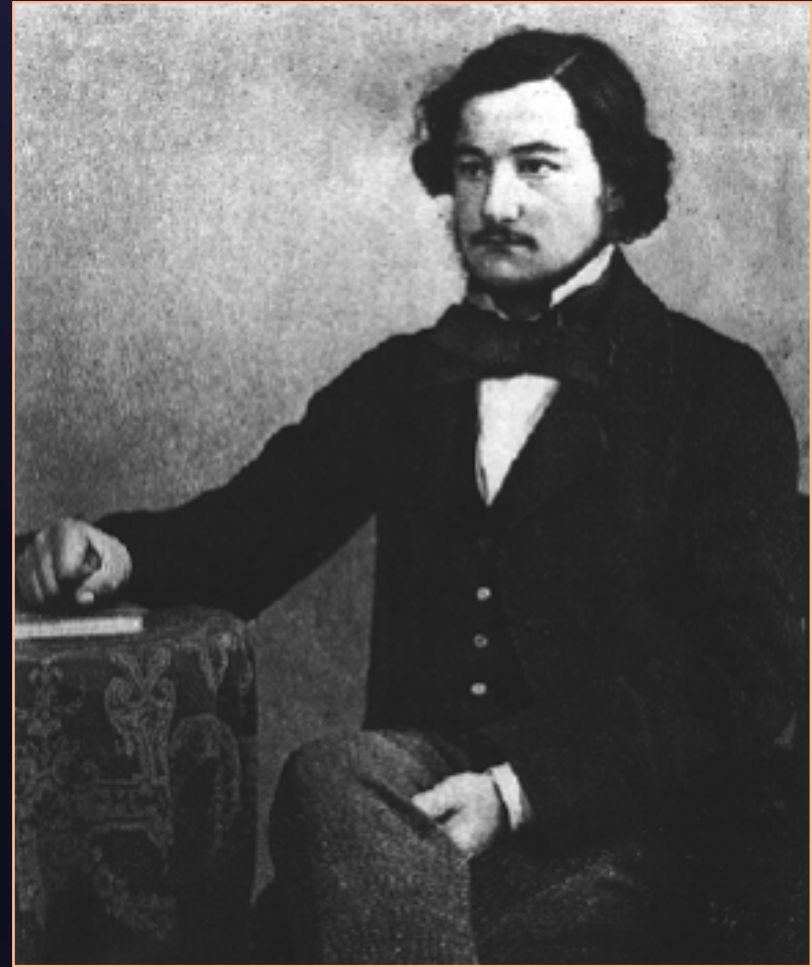
England ca 1860

Begins as philosophy

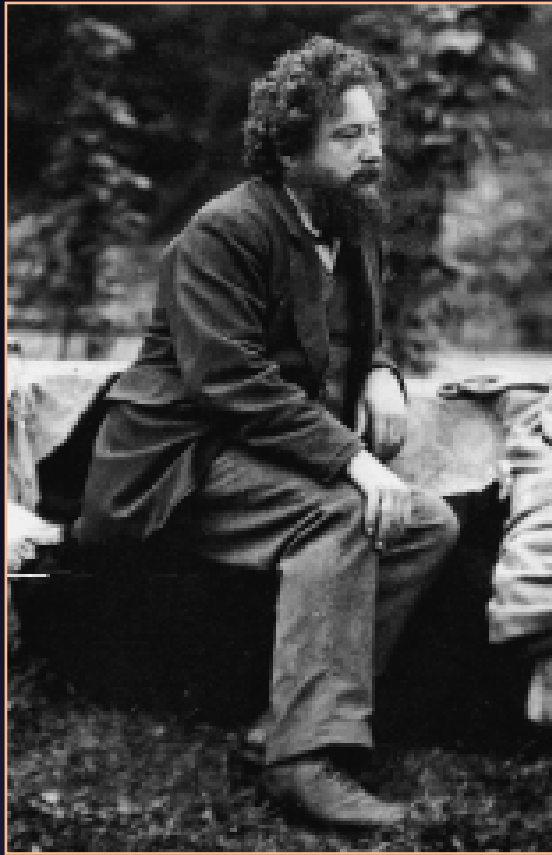
Becomes a design ↙

Led by William Morris –

“Father” of Arts and Crafts



1834 - 1896



Morris Believed...

- ❖ Industrialism was causing social ills
- ❖ Mass production was leading to bad taste & poor workmanship
- ❖ The assembly line degraded people

Morris Philosophy

- ❖ Eliminate negative impact of industrialism
- ❖ Eliminate machine production
- ❖ Promoted hand-made goods
- ❖ Restore Gothic ideals
- ❖ Restore Gothic architecture, furniture

www.ccnycuny.edu/wmorris/morris.html

WILLIAM MORRIS



“Have nothing in your house that you do not know to be useful or believe to be beautiful.”

www.morrissociety.org

William Morris

www.myplanet.net/xineann/morris/

- ❖ Artist, designer
- ❖ Philosopher,
- ❖ Social reformer
- ❖ Socialist
 - ◆ Party activist - 1876
- ❖ Author, poet
 - ◆ Utopian novels
- ❖ Typographer - 1890



Meets Jane Burden

- ❖ Artists' model 1858
- ❖ Marries - 1859
 - Needs a home...

Jane as “Queen Guinevere” (1858). This is Morris's only extant oil painting. He abandoned it so it was eventually completed by Dante Gabriel Rossetti and Ford Madox Brown.



Philip Webb



Cabinet, 1861

- Metropolitan Museum of Art

Designed by Philip Webb (British, 1831–1915), for Morris, Marshall, Faulkner & Co.,

Maker; Sir Edward Burne-Jones (British, 1833–1898), Painter

Made in England

Painted pine, oil paint on leather, brass, copper H. 73 in. x W. 45 in. x D. 21 in.

Rogers Fund, 1926 (26.54)

Morris - Architectural apprentice to

- ◆ Philip Webb
- ◆ 1860 designs home as English Great Hall



The “Red House”

Red brick -
Gothic revival

❖ Morris discovers gift for “crafts”

- ◆ Embroidered hangings, murals
- ◆ Furnishings -



The Red House

Red House Interior

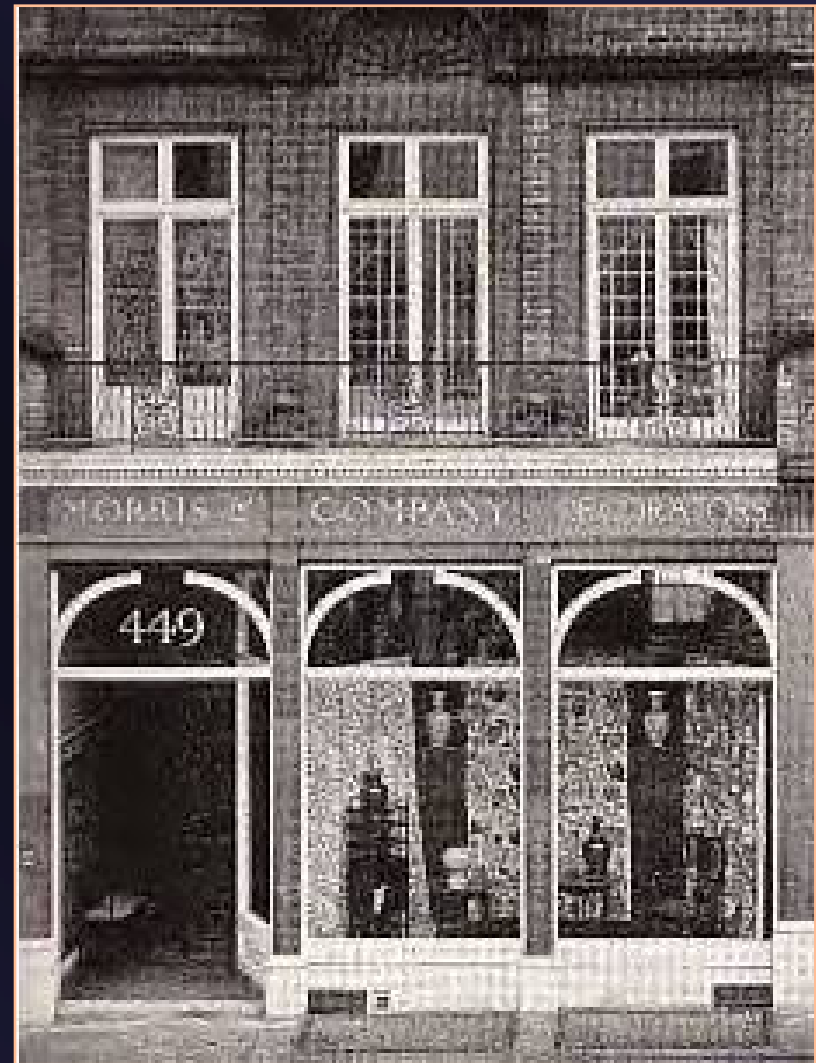


arch.ou.edu/

Morris, Marshall, Faulken & Co. 1861

Later - Morris & Co

- ❖ Stained Glass
- ❖ Hand-painted tiles
- ❖ Tapestries
- ❖ Carpets
- ❖ Murals
- ❖ Textiles
- ❖ Furniture, interiors



Tiles

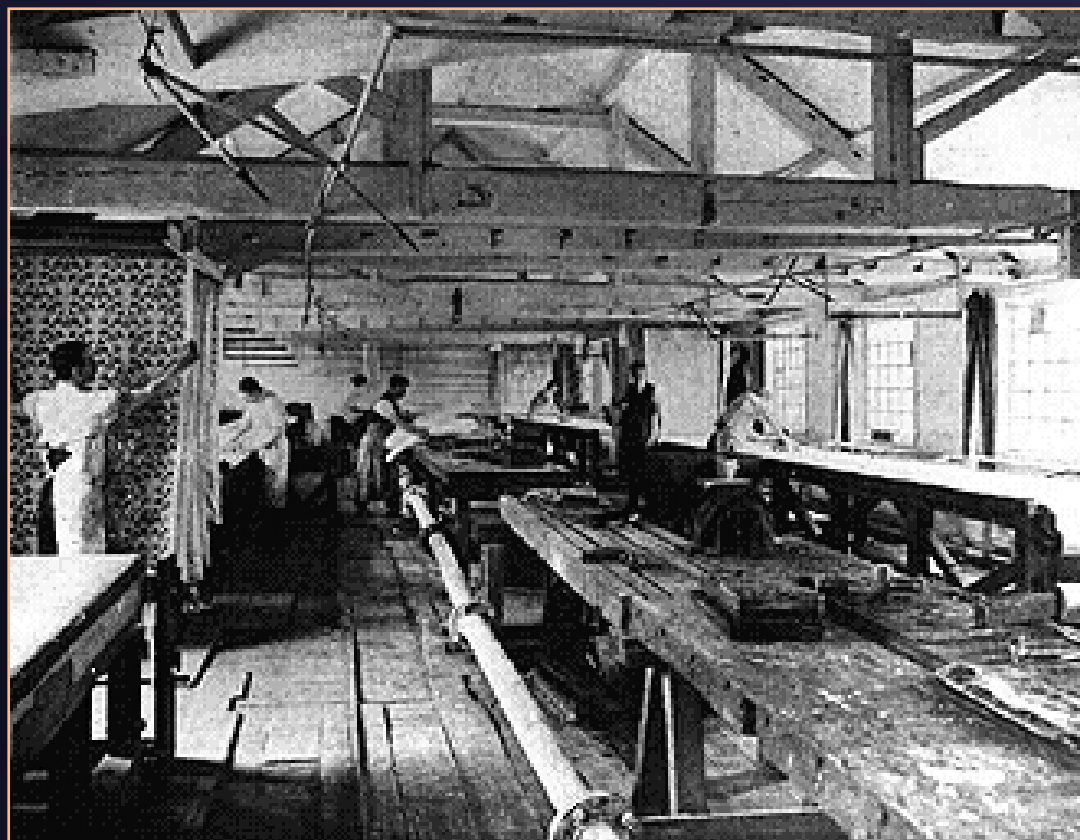


Stained Glass



www.myplanet.net/xineann/morris/morris_c.jpg

Block-print Fabrics



Block-printing --on the left, a workman is hanging up lengths of newly-printed chintz. On the right, printers are working at long benches in front of a row of windows. Some of the carved pear-wood printing blocks can be seen on a bench in the foreground. After dyeing and printing, the final, outdoor process in the manufacture of chintzes was 'crofting' ...spreading 'the cloth on the grass with its printed face to the light, so that the whites may be purified and all fugitive colour removed in nature's own way ... the meadows round the works in fine weather are bright and gay with long strips of many-coloured material stretched upon the buttercups and daisies.' www.lbwf.gov.uk/wmg/photos2c.htm

Note the distinctive acanthus leaf pattern often used by Morris.



“Acanthus”



“Artichoke”

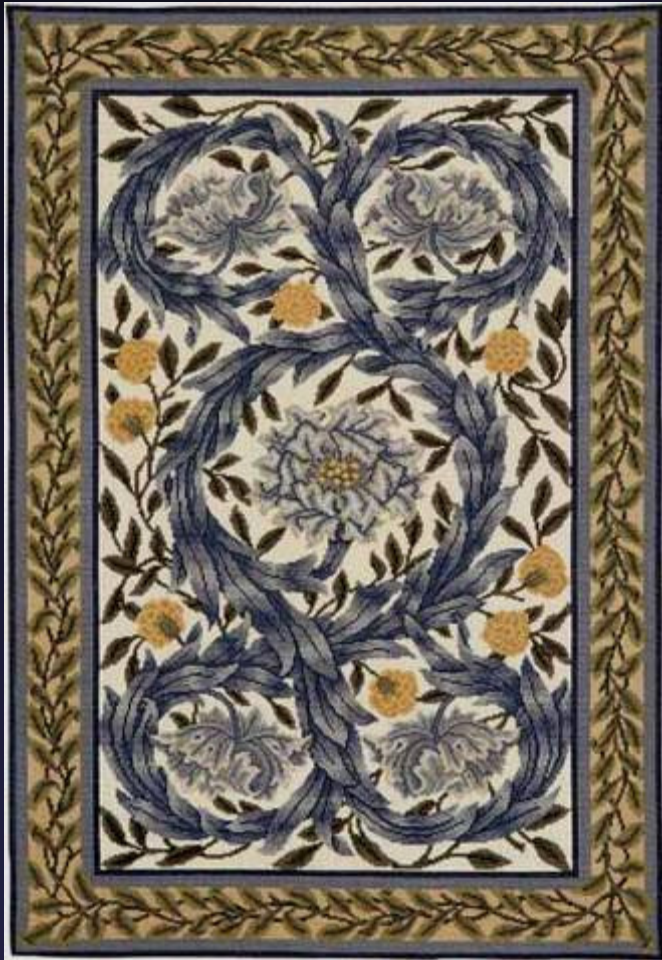
Morris Tapestry



'Acanthus and Vine' Tapestry, 1890 - Morris' first tapestry, designed and woven by him, it took 516 hours to complete. The design uses the repeating device of paired birds and acanthus leaves.

www.rchme.gov.uk/images/b9010313.jpg

<http://www.bethrussellneedlepoint.com/needlepoint/afmari/bafmarug.jpg>



http://www.essentialart.com/acatalog/William_Morris_Garden_of_Delight.html

"The Arming and Departure of the Knights"

Reproduction tapestry by Sir Edward Burne-Jones and William Morris.



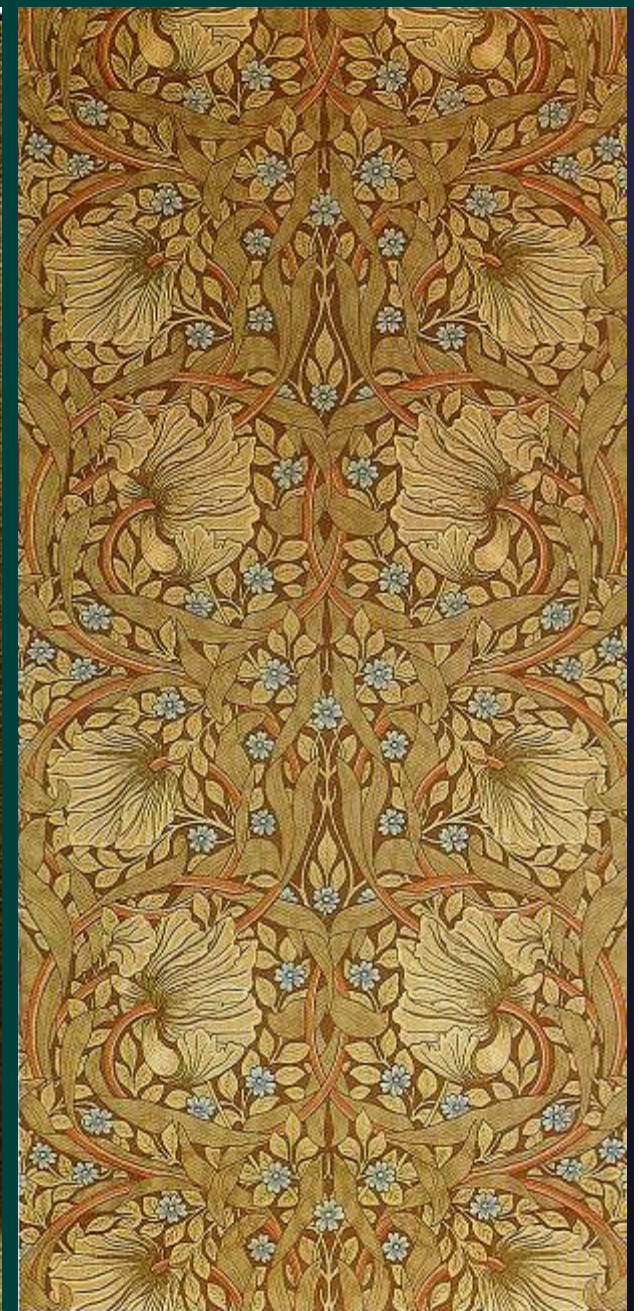
Morris Textile Patterns



“Bluewandle”



“Strawberry Thief”



This is a current advertisement for Morris wallpaper and fabrics. They are still being used in a variety of interiors today.

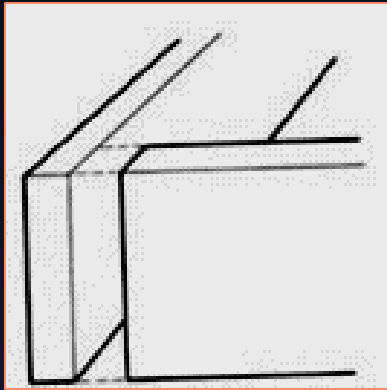
William Morris, Billiard Room, Wightwick Manor, Staffordshire, featuring Pimpernel Wallpaper.

Morris Furniture

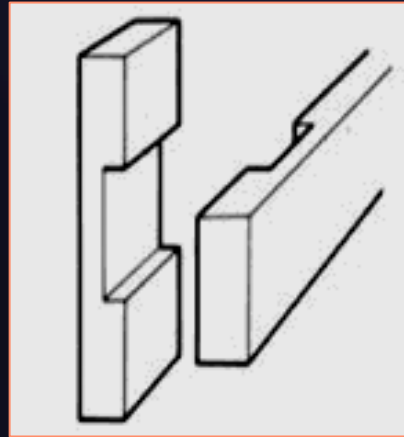
- ❖ Sturdy
- ❖ “Honest
craftsmanship”
 - ◆ Exposed joinery



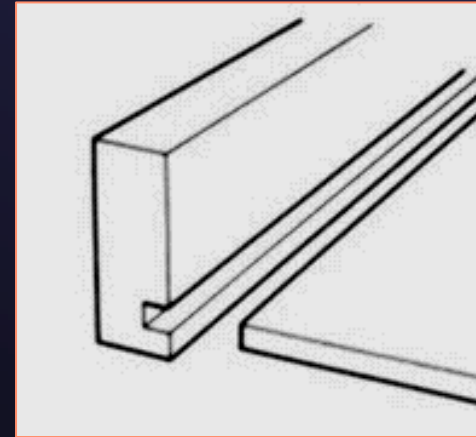
Joinery



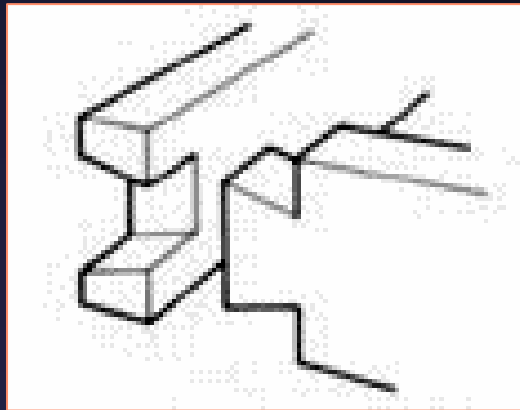
Butt Joint



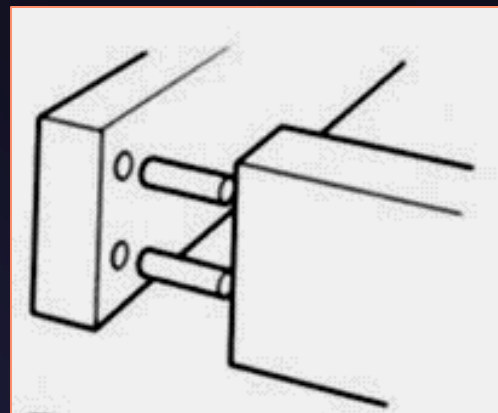
Cross Lapped Joint



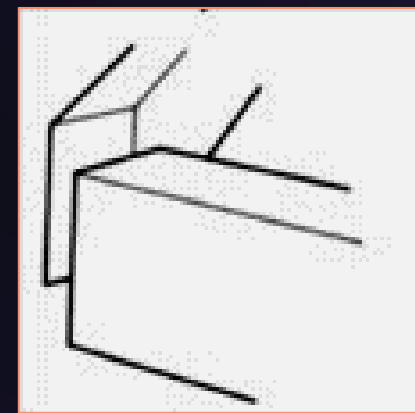
Dado Joint



Dovetail Joint



Doweled joint



Miter Joint

Morris Chairs



Morris furniture was mostly designed by others.

www.cuny.cuny.edu/wmorris/graphics2/adchairs.gif

<http://freespace.virgin.net/rita.damper/thonet.html>



The “Sussex”

The “Rossetti”



c. 1865

www.artsandcraftsfurnitureco.co.uk/stockpops/drach33.htm

Morris Settee



Morris Chair

Designed by Webb
for Morris & Co.



www.morrissociety.org/graphics2/chair.gif

Morris & Co. Furnishings



Morris & Co. display at Liberty's department store - Regent Street, Westminster, London - 1897

Morris Influence





www.burrows.com/morris/visits.html

Typography

- ❖ Kelmscott Press
 - ◆ Utopian writings &
 - ◆ Illustrations
- ❖ “Chaucer” =
 - ◆ most famous

Kelmscott Manor -
1871



Morris' Bed and Bedroom, at Kelmscott Manor in 1990:



The bed is 17th century oak; curtains embroidered in wool on natural linen by his daughter, May Morris. The valance has Morris' poem "For the bed at Kelmscott" (1891). The coverlet has bouquets and a quotation from Morris's poem "A Garden by the Sea" from the "Life and Death of Jason" 1867. It was embroidered by Mrs. Morris. The wallpaper is a modern printing of the Morris' Vine of 1873. The carpet is a modern weaving of the "Vine and Pomegranate" designed by Morris or Kate Faulkner c 1877.

www.rchme.gov.uk/images/b9010320.jpg

Chaucer



Chaucer Cabinet

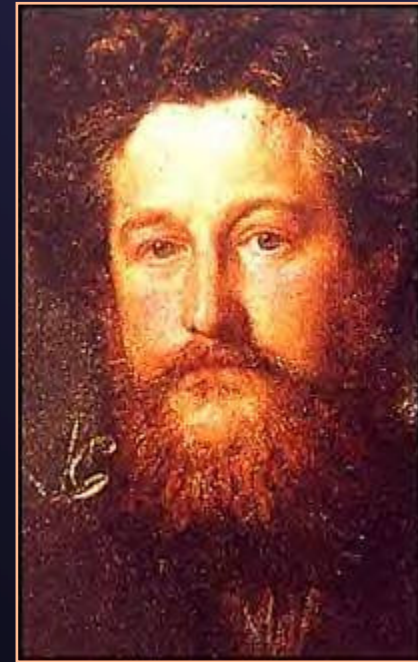
- ❖ bright red inside

Designed by
C.F.A. Voysey, 1899



Paradox

❖ Handcrafting...



"We have made of a great social movement , a narrow and tiresome little aristocracy working with great skill for the very rich."

Finis

Edward Godwin



Sideboard, 1867, England